

# KVF series

## AC/DC KILOVOLTMETERS



100kV (AC)/150kV (DC) RC Voltage Divider



SG3005 Digital AC/DC Peak Voltage Meter

**AC/DC KILOVOLTMETERS** is an indispensable instrument in every modern high-voltage laboratory and test field where it occupies a wide range of important functions. It is the most basic test for every test in the high voltage test field.

KVF series **AC/DC KILOVOLTMETERS** make up by two parts. One is AC/DC RC voltage divider, the other is SG3005 AC/DC peak voltage meter.

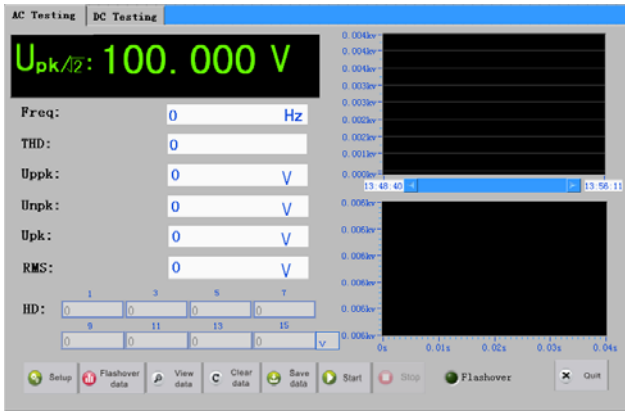
AC/DC RC voltage divider can be continuous running in the rated voltage, all high voltage arms and low voltage arm of RC voltage divider is self contained. It is more reliable and more convenient to moving.

SG3005 Digital AC/DC Measuring System is a microprocessor controlled device for accuracy measuring AC, DC and also can be used for testing voltage waveform distortion and ripple factor.

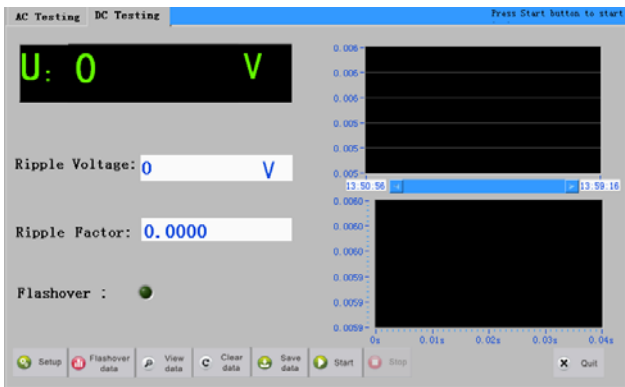
The SG3005 has implemented a flash detector which stores and shows the last voltage measurement and its polarity before a breakdown or flashover occurs.

### Features:

- ◆ Precision accuracy and lasting reliability, national instrument hardware inside.
- ◆ Portable, rugged units for the field or laboratory testing.
- ◆ Normally 10V-1200kV models available to satisfy a wide range of testing applications.
- ◆ In all testing range arrive 0.5%(AC), 0.5%(DC) accuracy. If using standard capacitor as high voltage arm and low voltage arm, the accuracy can arrive 0.005% AC testing..
- ◆ AC voltage measurement by capturing Frequency, THD, Uppk, Unpk, Upk, RMS, HD, Peak/:2 values and flashover voltage.
- ◆ DC voltage measurement and it's ripple factor.
- ◆ Flash detection of AC and DC flashovers. The generator can automatically be stopped from recharging.
- ◆ Plotter output for recording of AC and DC voltages on an external X-Y graph recorder.
- ◆ BNC, R16,LEMO signal interface can be accepted.
- ◆ K1.K2 (Voltage divider ratio) can be set easily.
- ◆ Display the waveform and the voltage running waveform.



**AC Testing Interface**



**DC Testing Interface**

**RC Voltage Divider Specification:**

**100kV(AC)/150kV(DC)**

Rated capacitance of high voltage arm:	500pF
Rated capacitance of low voltage arm:	0.5uF
Rated resistance of low voltage arm:	580MΩ
Rated resistance of low voltage arm:	0.58MΩ
Divider ratio:	1000:1
Rated voltage:	100kV(AC)/150kV(DC)
Accuracy:	0.5%

**150Kv (AC)/200kV (DC)**

Rated capacitance of high voltage arm:	500pF
Rated capacitance of low voltage arm:	0.5uF
Rated resistance of low voltage arm:	800MΩ
Rated resistance of low voltage arm:	0.800MΩ
Divider ratio:	1000:1
Rated voltage:	150kV(AC)/200kV(DC)
Accuracy:	0.5%

(OTHER VOLTAGE LEAVEL DIVIDER UP TO CUSTOMER'S REQUEST.)

**SG3005 Digital AC/DC KV Meter Specification:**

**AC Measurement**

Measurement modes: Frequency, THD, Uppk, Unpk, Upk, RMS, HD, Peak/:2, Waveform etc;

Input Voltage range: 0 ... 750 V rms

Frequency Range: 10 ... 1000 Hz

Accuracy: ± 0.1% rdg, ± 2 counts

**DC Measurement**

Measurement modes: DC, Ripple factor, Waveform etc;

Input Voltage range: 0 ... 1000 V

Accuracy: ± 0.1% rdg, ± 2 counts

**Power Supply**

Line Voltage: 110V-270V AC

Line Frequency: 50 Hz、60Hz

Power Consumption: 10 W

**Environmental Conditions**

Operating temperature: -10 ... 40° C

Humidity Range: 10 ... 80 % r.h., n.c.

**Weight and Dimension**

Weight: 5 kg

Dimension: 365×269×151(W x H x D) mm

**For further information please contact:**

**SHANGHAI JIUZHI ELECTRIC CO., LTD  
(Samgor Technology)**

Add: No.500, Renmintang Rd., Caolu, Pudong, Shanghai, 201209, China

Tel: 86-21-58999552 58999556

Fax: 86-21-33901039

E-mail: [info@samgor.com](mailto:info@samgor.com)

Http:// [www.samgor.com](http://www.samgor.com)



---

---